



City of West Hollywood  
California 1984

# WEHO | DESIGN DISTRICT STREETSCAPE

Construction Updates  
September 28, 2023





# Staged Schedule

---

**Stage 1:** May 9, 2022 – Nov 2022

**Stage 3:** Jul 2022 – Oct 6, 2022

**Stage 5 (South):** Oct 6, 2023 – Dec 30, 2023

**Stage 5 (North):** Jan 3, 2023 – April 3, 2023

**Stage 4:** April 3, 2023 – June 28, 2023

**Stage 2:** June 28, 2023 – Oct 2023

**Final Activities in All Stages:** Sept 2023 – Nov 2023

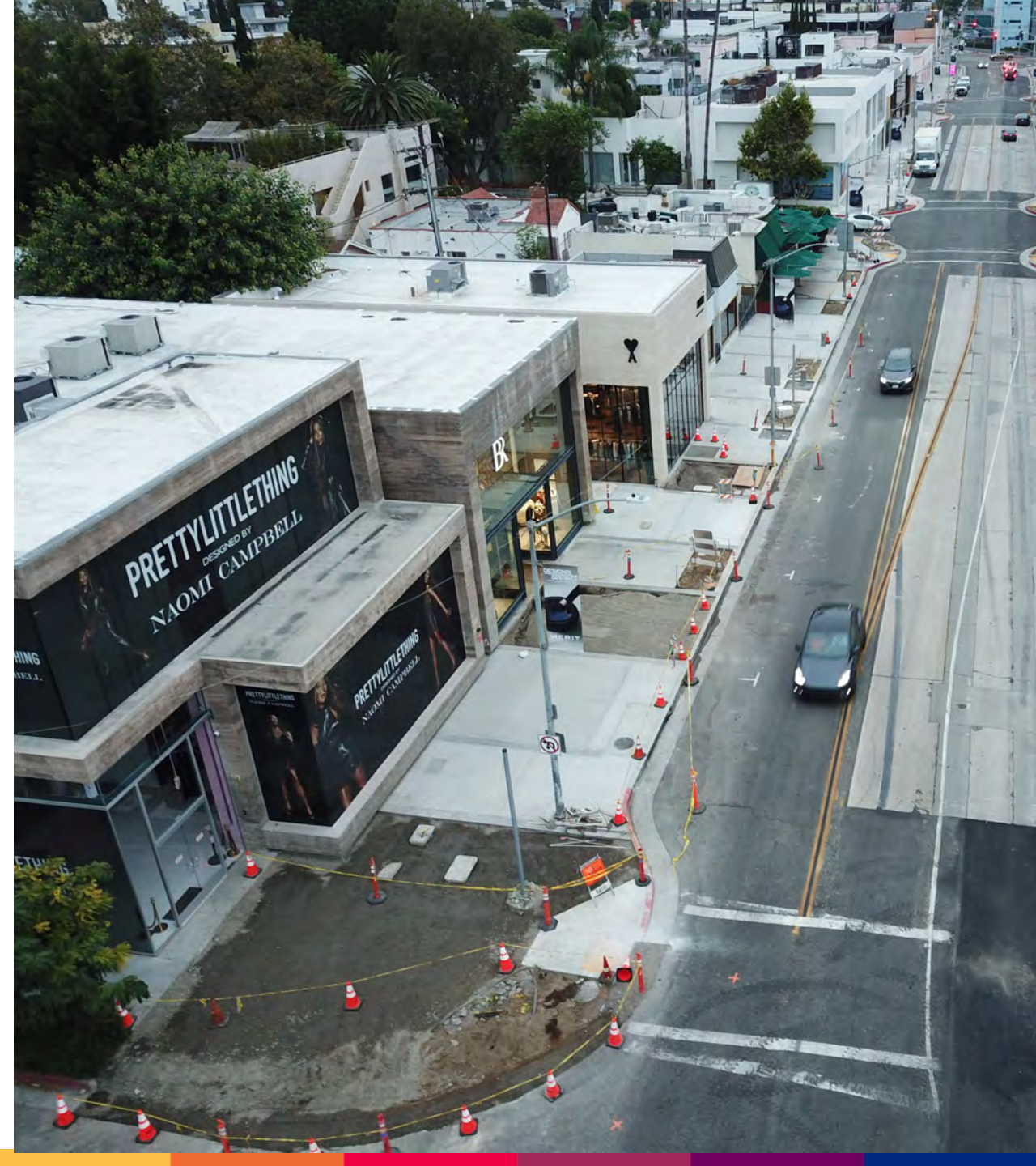




# Current Activities

## Uplifting & Deficient Sidewalk Replacement

- Remove and replace uplifted sidewalk
- Excavate 28 inches and replace with non-expansive soil
- Various locations including: 8607, 8587, 8585, 8583, 8565, 8551





# LADWP Mainline Project

**Start date:** August 23, 2023 (on Huntley)

**Location:**

- Huntley Drive from Melrose Ave to Sherwood – Began construction on Aug. 14. Anticipated to be complete the week of Oct. 18
- West Knoll from Melrose Ave to Santa Monica Blvd. – Began construction on Sept. 18. Anticipated to be complete in December

**Schedule:**

- Monday – Saturday
- 8AM – 4PM



# Current Activities

---

## Sandblast Sidewalks

- Sidewalks will receive decorative sandblast treatment to add texture
- Bands and 5x5 panels will be sandblasted
- Pedestrians will be detoured into street with delineated business access
- Sidewalks opened as work progresses
- **Schedule: Begin Monday, Sept. 25, 2023 (Stage 2)**





# Sidewalk Sandblast

1	Sept. 25 – 28:	San Vicente to Norwich (south)	Approximate sandblast schedule
2	Sept. 29 - Oct 2:	Huntley to Westbourne (south)	
3	Oct. 2 – 4:	Westbourne to Westmount (south)	
4	Oct. 4 – 6:	Westmount to West Knoll (south)	
5	Oct. 5 – 10:	West Knoll to La Cienega (south)	
	TBD	La Cienega to Croft (south)	
	TBD	Croft to La Cienega (north)	
	TBD	La Cienega to San Vicente (north) working east to west	





# Current Activities

## Storm Drain

- Install 2 new catch basins east and west of Norwich
- Date: Begin Oct. 2, 2023

## Stage 2 Traffic Control during Gathering Space Work

- Restore parking from San Vicente to Norwich & Huntley to Westbourne
- Week of Oct. 9

## Tree Planting

- Began September 26, 2023





# Norwich Gathering Space



Image @ West Hollywood West Residents Association



# 130 NEW TREES BEING PLANTED!

Types of Trees Being Planted

## *Pink Flowering Trumpet*

### Characteristics

- 20' – 50' tall when mature
- Pink/purple flowers in the spring
- Little to no sap drip
- Tropical to subtropical regions



## DID YOU KNOW?

Tree diversity protects from wiping out an entire block of trees if a specific species dies from natural diseases.



## *Chinese Pistache*

### Characteristics

- 30'+ tall and wide when mature
- Color changing canopy of orange, red, and yellow in the fall
- Deciduous (sheds leaves once annually)
- Little to no sap drip
- Tropical to subtropical regions

## *London Plane*

### Characteristics

- 23' – 50' tall when mature
- Color changing canopy of brown in the fall
- Deciduous (sheds leaves once annually)
- Leaves grow back in the spring
- Little to no sap drip





# Final Construction Activities

---

- Irrigation system & testing: Late Sept.
- Decorative sidewalk sandblasting: Began late Sept.
- Landscape planting: Began late Sept.
- Fiber optic cabling & splicing: Begin early Oct.
- Benches & bike racks: Begin early Nov.
- Final asphalt grinding, paving, striping: Nov.





# Final Construction Activities

---

## **Final Asphalt Grinding, Paving, Striping**

- Three-day, double shift to expediate the work
  - Grinding: 8AM – 4PM
  - Paving: 9PM – 6AM (night work)
- Day work: Soft closures with flaggers (one-way traffic & local access only)
- Night work: Hard closures (road closed)





# Lighted Crosswalks

---





**75<sup>th</sup> ANNIVERSARY**





## JOIN OUR MAILING LIST

**Email Us**

WeHoDesignDistrictStreetscape  
@bergcm.com



## GIVE US FEEDBACK

**Project Feedback Line**

1 (800) 362-3996



## VISIT OUR WEBSITE

**Project Website**

[WeHoDesignDistrictStreetscape.com](http://WeHoDesignDistrictStreetscape.com)



# QUESTIONS

