

## Weaver's Walk Temporary Asphalt and Artificial Turf Installation

### SCHEDULE UPDATE



## Weaver's Walk Temporary Artificial Turf Installation

To enhance walkability, safety, and aesthetics between now and the construction of the Weaver's Walk, temporary asphalt walkways and artificial turf will be installed in the public right of way between Huntley Dr. and N Norwich on the south side of Melrose Ave. These additions are aimed at ensuring smooth navigation and a pleasant environment for all during the interim period until construction resumes.

### WORK SCHEDULE

#### June 5 & 6, 2024: Compaction

Compaction of loose base rock work will commence and take two days to complete.

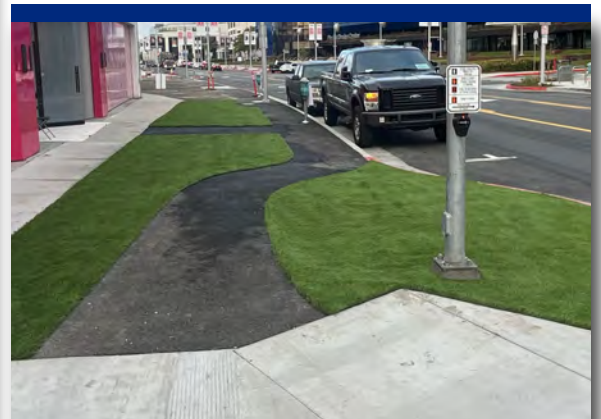
#### June 7 - 21, 2024: Turf Installation

Crews will return to install artificial turf in designated areas. Work is estimated to take approx. two weeks to complete.

### WHAT TO EXPECT

- **Construction crews, trucks, and material on site.**
- **Pedestrian detours with maintained business access.**
- **Minimal intermittent noise.**

*Approximate walkway and artificial turf installation. Not to scale.*



*Example of temporary asphalt walkway with  
artificial turf installation.*

## Keep in Touch

- ✉ WeHoDesignDistrictStreetscape@bergcm.com
- ☎ 1 (800) 362-3996
- 🌐 wehodesigndistrictstreetscape.com

## Special Thanks

Funding partially provided by  
Metro, a partner in our community.