



WEHO | **DESIGN DISTRICT**
STREETSCAPE

Phase 2B – Utility Undergrounding
(Almont + La Peer)

October 3, 2024



City of West Hollywood
California 1984



Meet the Team

Lead Agency



Construction Manager



Contractor



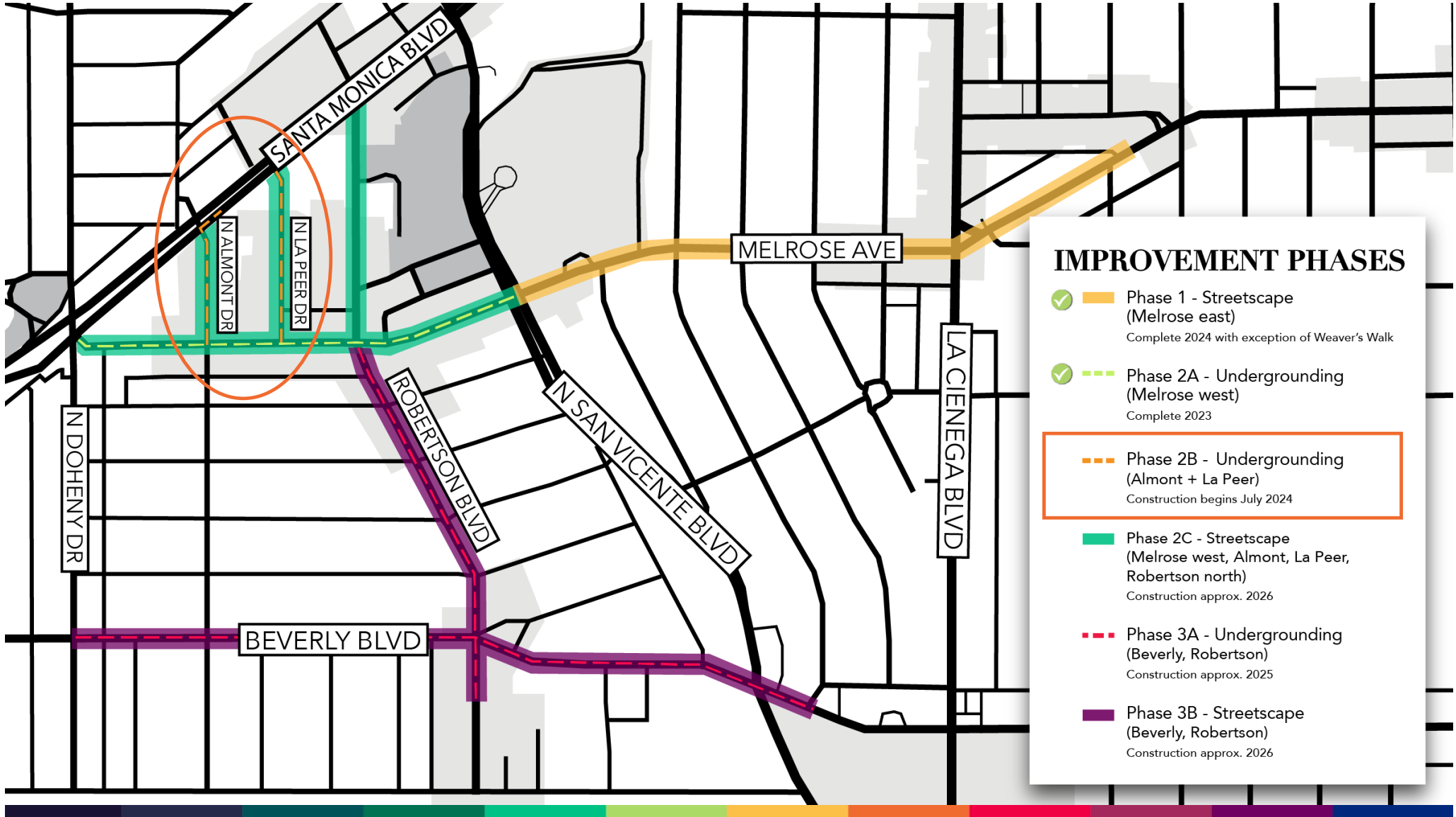
Utility Companies





The Design District will be enhanced by the following upgrades:

- New street paving
- New wider, decorative sidewalks
- New LED energy efficient streetlights
- New In Roadway Lighting at crosswalks which alerts cars with street level blinking lights to slow down and stop
- Storm drain improvements
- Electric Vehicle charging stations
- Improved bus shelters
- New landscaping and tree replanting



Utility Undergrounding

- Declutters airspace
- Protects utility lines from weather, tree branches, animals, and people
- Reduces fire hazards, accidents, and power outages



What to Expect During Construction

- Construction equipment and crews on site.
- Intermittent noise from machinery.
- Lane closures and parking removals to provide access to the work and ensure safety.
- Temporary driveway restrictions with notification.
- Pedestrian access to businesses will be maintained.
- Construction crews will minimize dust and noise as much as possible.



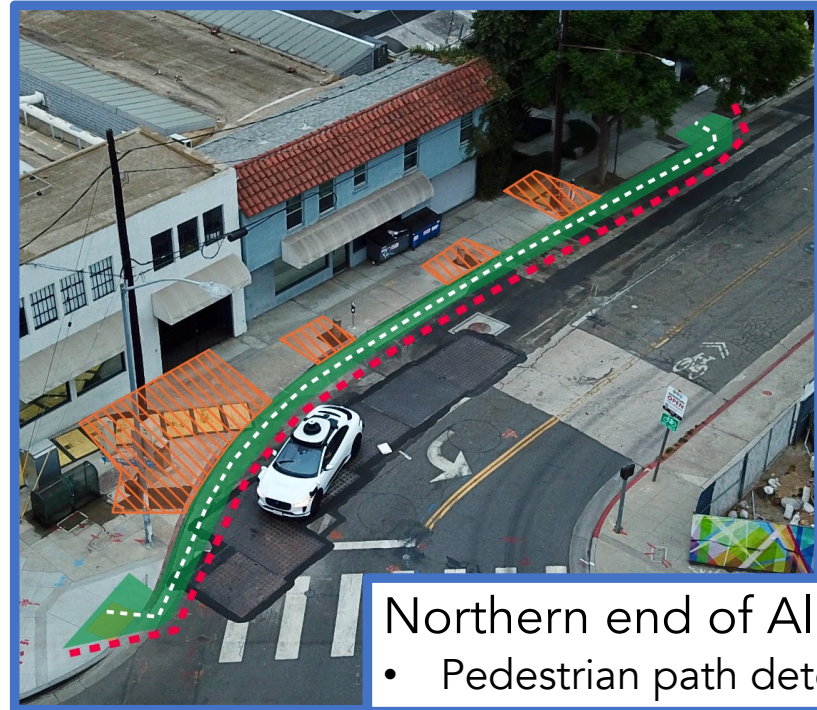
Current Activities

Concrete Restoration on Almont Dr October 2 – 8, 2024



Middle of Almont Dr.

- Pedestrian path detours
- ADA ramps will be maintained for pedestrian access to businesses
- Vehicle access within 24hrs of pour



Northern end of Almont Dr.

- Pedestrian path detours

Schedule Look Ahead

- October 10, 2024: La Peer potholing to begin
- October 14 – 16: Almont roadway striping and traffic signal detector loops
- October 17: Resume potholing and commence saw cutting on La Peer



Schedule Overview

Almont Dr. Construction: July – October 2024

La Peer Dr. Construction: October – May 2025

The extended construction period on La Peer Dr is due to the longer street length, a larger scope of work, and an increased number of lateral utility connections to the buildings.

La Peer potholing to begin on October 10, 2024

Working Hours: 8AM – 5PM

Monday – Friday

Lane Closures: 9AM – 4PM



Work Activities

- Sawcut and remove pavement for mainline trench in roadway.
- Excavate and work in trench.
- Mainline trench runs north/south from Santa Monica Blvd to Melrose Ave.
 - Start at Melrose Ave and work in three sections towards Santa Monica Blvd.
- Trenches will be covered with steel plates outside of construction hours.



Vault Installations

- Two vaults that house the utilities will be placed in the roadway.
- Both vaults installed on the same day.
- Process takes about 5 days.
- Anticipated to begin October 24, 2024*

Day 1 – 3 & 5: Excavation, shoring, grading, and backfill

- One through traffic lane on east side of Almont Dr.
- Flaggers to direct traffic.

*Businesses will be alerted in advance of actual dates. Individual business will be contacted to discuss coordination and impacts.



Vault Installations

Day 4: Setting Vaults

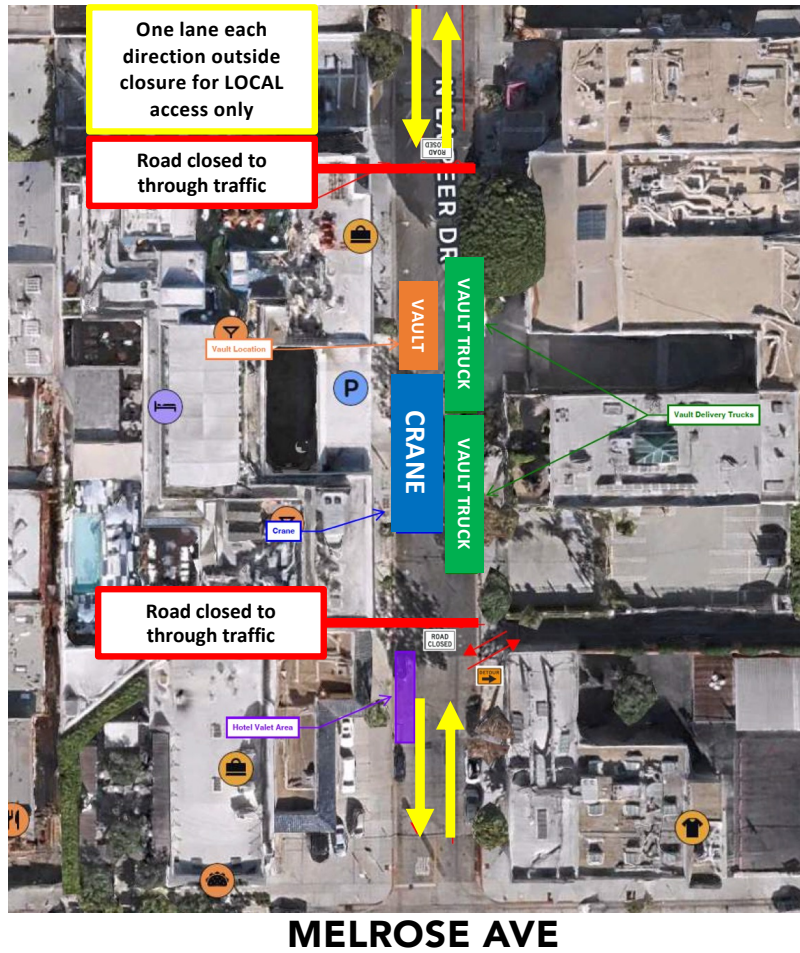
October 29, 2024*

- Large cranes required for installation.
- Road closed to through traffic at vault.
- Flaggers to guide vehicles outside the closure.
- Flaggers to guide pedestrians inside the closure.

*Date subject to change. Businesses will be notified of actual date in advance.

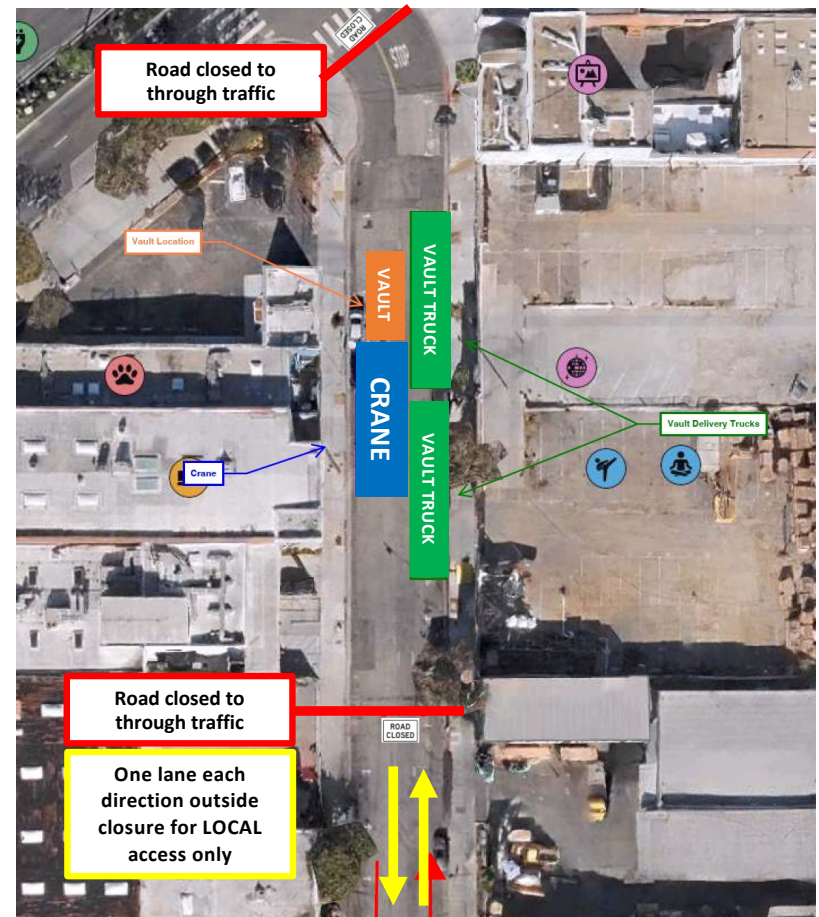


Morning: South Vault



Afternoon: North Vault

SANTA MONICA BLVD



Work Activities

- Continued work for mainline trench.
- Sawcut and remove pavement for laterals (connection to properties).
- Install underground conduit.
- Utility companies (SCE, Verizon, AT&T, & Spectrum) to connect cable.
- Pave roadway asphalt.
- Sidewalk & driveway restoration (where necessary).
- Remove six utility poles.



Private Property Work

- 13 total locations that require access to perform upgrades on private property.
- Must have property owner agreement and signature to perform work.
- No cost to property owner.
- Tenant coordination to schedule work and allow access.
- Team will reach out to businesses individually – your cooperation is appreciated!



Private Property Work

- City contractor will perform major construction and prepare building infrastructure for connections.
- Planned utility interruptions during preparation work will be announced.
- Utility shut-downs (cut-overs and tie-ins) will be scheduled by individual utility companies at a later date.

Business will be alerted of confirmed dates and impacts.



Utility Company Work

- Construction team will alert businesses of planned **outage windows**, but precise outage times are not disclosed due to security measures.
- Sign up for planned and emergency outage alerts by visiting www.sce.com



AT&T



SOUTHERN CALIFORNIA
EDISON®

Charter
Spectrum▶

verizon✓

SCE Outage Alerts

- Planned and emergency alerts for account holders and/or tenants
- Sign in or set up account at SCE.com

SOUTHERN CALIFORNIA EDISON
Energy for What's Ahead™

≡ MENU 🔍 SEARCH ENGLISH ▾ 👤 LOG IN/REGISTER

[Home](#) > [Outage Center](#) > [Get Alerts](#)

Get Outage Alerts

[Report Outage](#) [View Outages](#)

Learn when there's an outage in your area and when your power will be restored.

Outage and PSPS Alerts for SCE Customers

Find out when an outage of any kind may affect your neighborhood. Go to the Preference Center in My Account and choose to receive alerts by email, text, or voice call.

[Sign Up for Outage Alerts](#)

PSPS Address Alerts for Non-SCE Customers

These alerts are helpful for residential and commercial tenants who do not maintain their own SCE service accounts, caregivers, frequent travelers, and service providers. You can choose to receive alerts by email, text, and/or voice message. Standard message and data rates apply.

[Sign Up for PSPS Alerts](#) [↗](#)

[How to Unenroll](#) ⓘ

ACCOUNT HOLDERS **TENANTS**


SCE Outage Alerts

- Once signed in, click on Preference Center
- Use toggles to turn on alerts and input desired contact information (email, text, or phone call)

PREFERENCE CENTER

Account Preferences

Paperless Billing ⓘ
Get your statements online. On




 [View / Edit](#)

Outage Alerts

Emergency Alerts ⓘ
Stay informed about Public Safety Power Shutoff (PSPS) events and Rotating Outages. On

   [View / Edit](#)

Repair and Maintenance Alerts ⓘ
Stay informed about unplanned repair and planned maintenance outages. On

   [View / Edit](#)

Other Notifications

Customer Preferences

Notification Language

Multiple language options are available for Public Safety Power Shutoff alerts and repair/maintenance alerts only. Language options will be expanded to encompass additional alert and notification types in the future.

English [Edit](#)

SCE Updates

Get updates about rebates, savings, and promotions.

Off

Need to update your customer information?

Website Language: English

[Manage Profile Settings >](#)



JOIN OUR MAILING LIST

Email Us

WeHoDesignDistrictStreetscape@
bergcm.com



GIVE US FEEDBACK

Project Feedback Line

1 (800) 362-3996



VISIT OUR WEBSITE

Project Website

WeHoDesignDistrictStreetscape.com

